

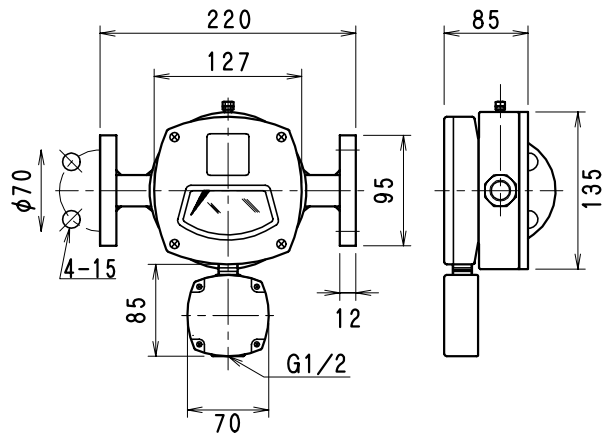
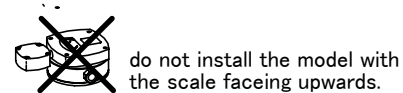
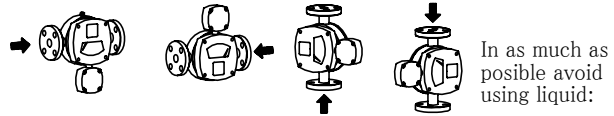
Estimate Request Sheet and Specification Drawing TO : SHOWA INSTRUMENT INFORMATION CO., LTD. Fax 03-3431-9413	Estimate Client		Date
	Company Name		
	Issuer by		Section
FAX		TEL	

Estimate it by this specification

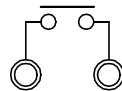
TAG NO.		
Fluid Name		
Scale	Max.	
	Min.	
	Normal	
density		
Viscosity		
Temperature		°C
Pressure		MPa
Switching		Lower OFF Upper ON
Set Point (Variable)		
Direction of flow		→
Accuracy		±3%F. S
Painted Color		Body: Gray / Case: Black
Connection Standard		JIS10K-FF
Nominal Pipe Size		15A
Accessory		
Quantity		

Flow direction and flowmeter position

left→right left←right bottom→top top→bottom



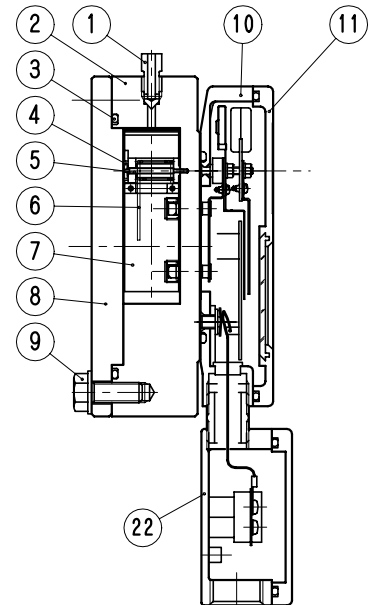
Internal Circuit



Contact Rating

Must not exceed the following;
 Contact capacity: MAX. 50VA
 Operating voltage: MAX. 220V AC/DC
 Operating current: MAX. 0.5A AC/DC

Max. Operating pressure: 1.4MPs
 Max. Operating temperature: 120°C



10	Terminal Box	ADC12	1	
11	Case Cover	Reinforced P.P	1	
10	Case	ADC12	1	
9	Bolt/Nut	SUS304	8	
8	Cover Flange	SUS304	1	
7	Flapper	SUS316	1	
6	Spring	SUS316	1	
5	Shaft	SUS316	1	
4	bearing plate	SUS304	1	
3	O-Ring	NBR	1	
2	Body	SUS304	1	
1	Vent Plug	SUS304	1	
No.	Part Name	Materials	Q'ty	Remark

Name	Flapper type Variable Area Flowmeter Small "FLAPTOR"®	Estimate	Made by	Aproved by
	Model No.		With Switch FE-0365	Estimate No.
SHOWA INSTRUMENT INFORMATION CO., LTD. Sales Department				